

Locating Our Memorial Rock

The historical monument to Saint Joseph's – St. Patrick's College is located in Rancho San Antonio Park at (what used to be) our "Peanut Athletic Field." It is very close to the entrance of the park and can be seen as soon as you leave the parking lot and walk across the bridge over Permanente Creek.

Driving directions:

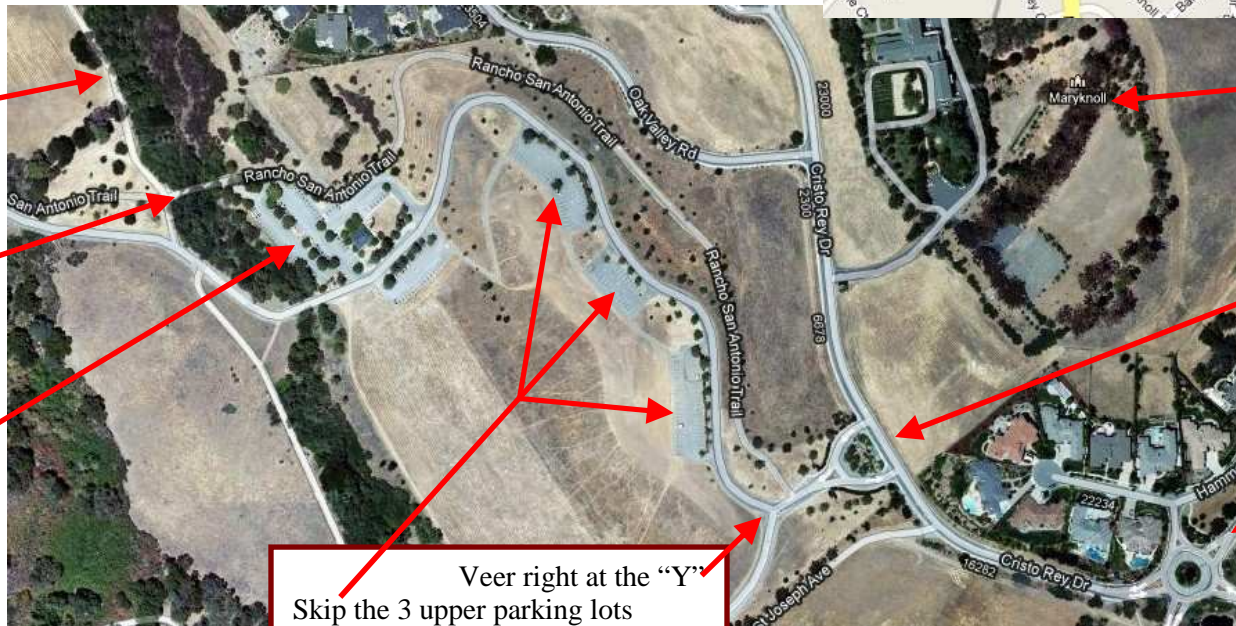
Heading South on Hwy-280: Exit on Foothill Expressway, make a right turn on to Foothill Expy, & another immediate right on Cristo Rey Drive.

Heading North on Hwy-280: Exit on Foothill Expressway, make a left turn at the stop light, drive underneath the 280 overpass, then a right turn on Cristo Rey Drive.

Using Hwy-85: Get on to 280 & take the Foothill exit, and then turn on Cristo Rey Drive as described above.

Using Hwy-101: Connect to 280 or 85, and then find the Foothill Exit.

Once on Cristo Rey Drive: follow it around to Rancho San Antonio Park. Turn left at the park's entry sign (which is very near Maryknoll), drive down the short hill, and park. Our monument rock is in the beautiful meadow just as you walk into the park.



Our school's monument is located here

Walk over the bridge at Permanente Creek

Rancho San Antonio lower parking lot

Veer right at the "Y"
Skip the 3 upper parking lots
Head for the lower parking lot

Maryknoll
(Potential optional parking)

Rancho San Antonio park entrance

Drive straight through this traffic circle on Cristo Rey Dr.